



Avtek

Engage | Lead | Inspire



---

**PRODUCT  
CATALOG  
2019/2020**

edition #3



Engage | Lead | Inspire

Avtek brand belongs to ViDiS S.A., a specialized audio-video distributor and leader on the Polish market. Company **started in 2004** now owns an extensive warehouse space allowing for **high stock levels** and constant product availability. Qualified staff works hard every day to keep the offer innovative and to make sure that all Avtek products meet highest requirements of **user friendliness** and stability while maintaining **high-tech specifications**.

The whole portfolio goes through rigorous testing before being introduced to guarantee flawless operation for the customer. Avtek interactive display line is the most spectacular example of those values put into reality, with customers high trust that allowed Avtek TouchScreen line to maintain **leading position in sales on Polish market**, as well as expand abroad.



Today Avtek products are available all over Europe









Based on those values ViDiS S.A. is a leader on Polish projection screen market with **over 10.000 screens sold** each year and interactive whiteboard / interactive display markets, with Avtek products being **the biggest brand in those categories** for many years in a row.

Avtek products are not only limited to Polish market. Trust in our brand and competitiveness of our offer made it possible for our products to also be available in among others: Baltic states, Belarus, Czech Republic, Slovakia, Ukraine, Hungary, Romania, Bulgaria, Slovenia, Croatia, Serbia, Moldova, Germany, Great Britain, France, Spain, Denmark, and even Singapore.

Our mission is to continue raising the bar for our products quality, user friendliness and stability, to break technological barriers and share our work with customers wherever we can.

# CONTENT

---

|                              |    |   |
|------------------------------|----|---|
| INTERACTIVE DISPLAYS         | 3  |    |
| INTERACTIVE WHITEBOARDS      | 9  |  |
| DIGITAL SIGNAGE DUAL DISPLAY | 13 |  |
| THIN / ZERO CLIENTS          | 17 |  |
| PROJECTION SCREENS           | 21 |  |
| MOUNTING SYSTEMS             | 29 |  |
| ACCESSORIES                  | 37 |  |
| WARRANTY                     | 40 |  |





# NEW REALITIES CREATED WITH TOUCH

---

INTERACTIVE  
DISPLAYS



# INTERACTIVE DISPLAYS AVTEK TOUCHSCREEN

## TOUCHSCREEN 5 LITE

TouchScreen 5 Lite is a series of universal Avtek interactive screens, equipped with everything that's needed: high quality panel with UHD resolution, Android system with useful apps, slot for a built-in computer and a set of ports that allow user to connect external devices like computers or cameras.

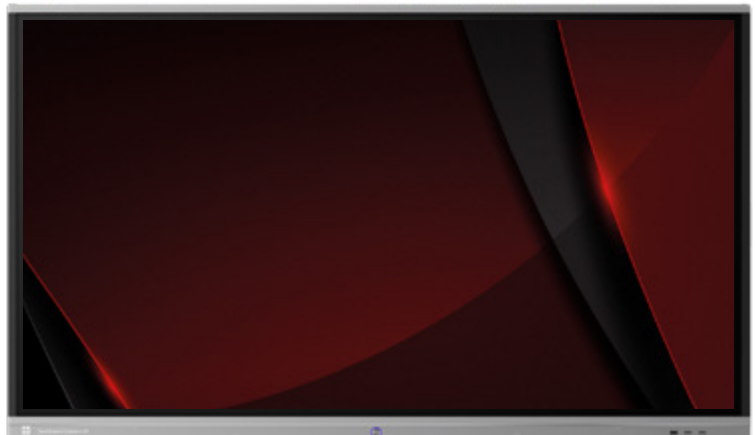
Lite series will be a perfect fit for education where it will become a multimedia learning center in every classroom, allowing more interaction with educational content. It will also be a useful replacement for a regular TV or projector in a conference room, allowing more effective meetings and sharing of ideas.



## TOUCHSCREEN 5 CONNECT+

TouchScreen 5 Connect+ series is an upgrade to TouchScreen 5 Connect, offering even more versatility and elegance. New Android module now has 8.0 OS version, displays 4K resolution and, because it's faster, it allows user to enjoy complete freedom when installing apps.

This model is also equipped with optical bonding technology, that significantly increases writing and noting comfort. Combined with Avteks unmistakable smoothness and responsiveness it brings user experience to a whole new level.



## TOUCHSCREEN 5 BUSINESS

TouchScreen 5 Business interactive screen is made for huddle rooms and small to medium conference rooms. It stands out with its elegant, flat design and wide functionality. Touch is recognized by capacitive sensing, an intelligent technology that not only makes writing experience the most natural but also recognizes touch pressure and can differentiate between palm and pen. Thanks to that users can comfortably rest their palm on the screen while writing.

TouchScreen 5 Business users can download apps from AvtekApps store and conveniently add them to their desktop, which can be customized by adding apps and widgets to it.





## Applications of Avtek TouchScreen 5 series



Using of interactive touchscreens makes the company meetings more effective and the communication much more simple. The problems are solved easier using the team working approach with brainstorming utilizing the new technologies.



Tourist information, secretary's office or reception desk equipped with interactive touchscreen gives the employees more time for their essential work. Thanks to Avtek TouchScreen it's possible to make self-service information points where the information is much more attractive and profitable.



Interactive touchscreens in hospitals, police stations and other public services upgrade the workflow in those institutions. In case of emergency situations the work organization and communication is smooth and easy thanks to those devices.



Interactive touchscreens in shopping malls help the clients find the specific shops and the shortest way to them. Moreover it's easy to check the best offers and hot deals offered by the shops, restaurants, cinemas or fitness clubs.



Using interactive monitors during lessons in kindergartens and primary schools makes big fun of learning and it helps to keep the focus of the kids. It also helps to understand described topics and makes the kids enjoy the learning process.



Youths at junior high schools and secondary schools need much attention and it requires more effort to attract them to school. The newest technology in education such as Avtek TouchScreen Pro series is one of the ways to do it efficiently.



Lectures, exercises or laboratories at universities can be much more attractive with interactive touchscreens. It's a perfect alternative to traditional way of teaching as the technology induces bigger interaction between students.



Application of interactive monitors during conferences, presentations and trainings is now becoming popular. This visual method of communication with additional interaction looks much more professional and improves the perception of the message.

## AWARDS

Avtek interactive products have been highlighted by consumers in a nationwide polls of popularity "Consumer Laurel" - a country-wide, pro-consumer project to determine the most popular products, brands and services in each category. In 2014 Avtek won "discovery of the year" award for innovative products and services that gained trust of customers after a short time on the market. In 2015 our brand was awarded with a special Grand Prix prize while in 2016 it received the highest award - Top Brand - which is given to brands that year to year maintain a dominant position in "Consumer Laurel" plebiscite, proving its success in the interactive products category.



Avtek interactive flat panels are the most popular screens in Poland according to FutureSource for years 2015 - 2018.

# INTERACTIVE DISPLAYS AVTEK TOUCHSCREEN

## SOFTWARE

### NOTE



**Note** is a fundamental software that enables anyone to use interactive functions offered by interactive screens. Made specifically for education environment, it gives access to wide spectrum of features: writing, editing, commenting, drawing and using all teaching tools included.

Note turns interactive screens into perfect teaching environment that builds up on TouchScreens intuitiveness and multimedia features and put at users disposal a rich set of specialized tools made for teaching school subjects.



### CONNECT



**Connect** is a software that allows for a two-way communication between a mobile device and a Windows PC – user can mirror desktops both ways, control PowerPoints presentations, use mobile device as a visualizer or touchpad.

- Controlling presentations: using Connect one can switch between PowerPoints slides, control what slide and next and annotate on them freely.
- Shared desktop: Windows desktop can be displayed and controlled from a mobile device or vice versa: mobile desktop can be displayed on the PC – user can control both with touch on TouchScreen and mobile simultaneously.
- Touchpad function: mobile device touch interface can be used as a TouchPad to conveniently control the PC wirelessly.
- File sharing: one can send any file (be it a photo, video or a document) straight to the PC and play it and note on it instantly.

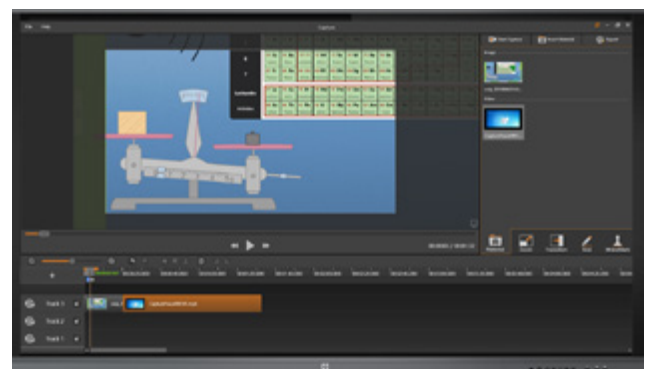


### CAPTURE



**Capture** makes recording videos and lectures easily and without effort. It lets the user record desktop, image from camera or both, has built in simple and intuitive editing studio and allows quick uploading to cloud storage.

It's intuitive and designed to be operated by touch so recording, editing and presenting will be easy even for unexperienced users, while saving and uploading to cloud is done with one click.



## ACCESSORIES

### AVTEK SHARE

**Avtek Share** is an intuitive wireless presentation system. It pairs with Avtek TouchScreen's ScreenShare Pro app and allows users to share their screen with just one click.



PRODUCT CODE: 1TVA09



## TECHNICAL SPECIFICATION

| Model                | Touchscreen 5 Lite 55/65  | Touchscreen 5 Lite 75/86                             | Touchscreen 5 Connect+ 65/75/86  | Touchscreen 5 Business 55/65   |
|----------------------|---|--|--|--|
| Diagonal             | 55" / 65"   | 75" / 86"  | 65" / 75" / 86"  | 55" / 65"  |
| Aspect ratio         | 16:9  |  |  |  |
| Resolution (px)      | 4K/UHD (3840 × 2160) @60 Hz   |  |  |  |
| Displayed colors     | 1,07 bn (10-bit)  |  |  |  |
| Brightness           | 300 cd/m <sup>2</sup>   | 350 cd/m <sup>2</sup>                                | 330 cd/m <sup>2</sup>  | 350 cd/m <sup>2</sup>  |
| Contrast ratio       | 4000:1  |  |  |  |
| Viewing angle        | 178°  |  |  |  |
| Panel life time      | 30 000 h  |  | 50 000 h   | 30 000 h   |
| Speakers             | 2 × 10 W  |  | 2 × 16 W   | 2 × 10 W<br>+ 15 W sub woofer  |
| Inputs               | 2 × HDMI 2.0, VGA, Audio  |  | 3x HDMI 2.0, 1x VGA, Audio, SPDIF  | 2 × HDMI 2.0, VGA, Audio, AV, SPDIF  |
| Outputs              | Audio   |  | HDMI, Audio  | HDMI, Audio  |
| Communication ports  | 3 × USB 2.0, 1 × USB 3.0, RS232, RJ45, 1 × USB Touch  | 4 × USB 2.0, 2 × USB 3.0, RS232, RJ45, 2 × USB Touch | 3 × USB 2.0, 3 × USB 3.0, RS232, RJ45, 2 × USB Touch   | 4 × USB 2.0, 1 × USB 3.0, RS232, RJ45, 2 × USB Touch   |
| Sensing type         | IR  |  | IR, optical bonding  | PCAP   |
| Touch response time  | <15 ms  | <7 ms  | <7 ms  | <20 ms   |
| Two color writing    | -   |  | Yes  |  |
| Surface protection   | Toughened Glass with Level 7 of Mohs Standard, 4 mm antiglare tempered glass  |  |  |  |
| Wi-Fi                | TP-Link dongle  |  | Built in Wi-Fi module  |  |
| Bluetooth            | -   |  | Yes  |  |
| Palm denial          | -   |  | Yes  |  |
| Pressure sensitivity | -   |  | Yes  |  |
| Configurable desktop | -   |  | Yes  |  |
| System               | Android 7.0, Cortex A73, 2 GB RAM, 16 GB memory   |  | Android 8.0, ARM Cortex A73 Dual Core + A53 Dual Core CPU, Mali-G51 GPU, 3 GB RAM, 16 GB memory  | Android 7.0, Cortex A73, 2 GB RAM, 16 GB memory  |
| Accessories          | Power cord (3 m), VGA cable (3 m), USB cable (5 m), audio cable mj 3,5 mm (5 m), plastic pen (3 pcs), remote controller, quick guide, CD or USB flash drive with software, TP Link Wi-Fi dongle |  | Power cord (3 m), HDMI cable (3 m), USB cable (5 m), stylus (2 pcs), remote controller, quick start guide, flashdrive with software, WiFi/Bluetooth module | Power cord (3 m), HDMI cable (3 m), USB cable (5 m), active pen (2 pcs), remote controller, quick guide, USB flashdrive with software, WiFi/Bluetooth module |
| Product code         | 1TV135 - Lite 55<br>1TV140 - Lite 65  | 1TV166 - Lite 75<br>1TV178 - Lite 86                 | 1TV195 - Connect+ 65<br>1TV196 - Connect+ 75<br>1TV197 - Connect+ 86   | 1TV186 - Business 55<br>1TV189 - Business 65   |

## Avtek OPS 4K i3 8100

## Avtek OPS 4K i5 8400

|                     |   |   |
|---------------------|---|---|
| Computer parameters | Intel i3 8100 Quad Core 3,6 GHz, 4 GB RAM, 128 GB SSD | Intel i5 8400 Hexa Core 2,8 GHz, 4 GB RAM, 128 GB SSD |
| Built-in cards      | Integrated graphic, sound HD and network              |   |
| Wi-fi               | Wi-fi 802.11ac  |   |
| USB 3.0             | 6 ports in USB 3.0 standard                           |   |
| Lan                 | RJ45  |   |
| Outputs             | mini-jack 3.5mm, mini display port, HDMI, VGA         |   |
| Inputs              | Microphone  |   |
| Product code        | 1TV180  | 1TV201  |



# SENSITIVE DIMENSION OF COMMUNICATION

---

INTERACTIVE  
WHITEBOARDS



## INTERACTIVE WHITEBOARDS AVTEK TT-BOARD

**Avtek TT-BOARD** interactive whiteboards stand out by combining exceptionally wide functionality with accessible price. Common parts in all boards are precise IR touch technology, aluminum frame and shortcut bars on both sides that give quick access to key software functions. Basic models have a pentray, painted steel surface and 6 touch points, while Pro series is distinguished by 10 touch points, interactive pentray that allows user to easily change pen colors and ceramic PolyVision e3 surface with lifetime warranty that ensures durability and dry erase ability, while displayed image is kept with very high quality.

Every board comes with Avtek Interactive Suite software.



### PRODUCT FEATURES

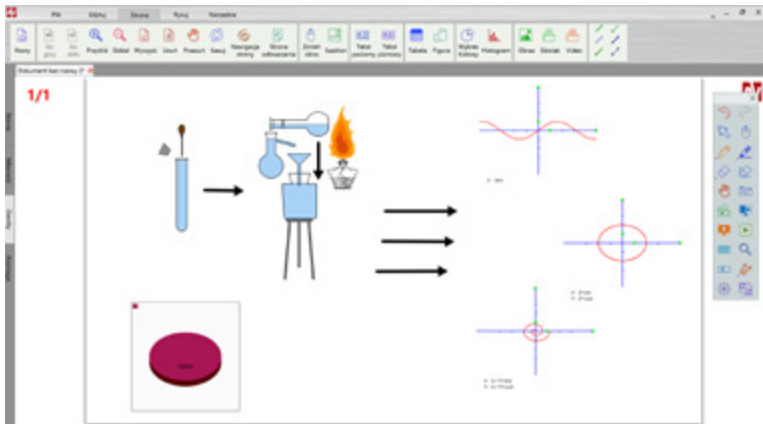
- TT-BOARD can be operated by finger or any other stylus.
- 6 (TT-BOARD 80, 90) and 10 (Pro series) touch points allow cooperation of number of students together using one whiteboard.
- Damage resistant surface fits classroom environment perfectly and can be used by children of all ages.
- Quick-use shortcut bars on the sides makes using this interactive whiteboard more intuitive.
- Dry erase painted steel (TT-BOARD 80, 90) and PolyVision e3 ceramic surface provides many advantages:
  - allows attaching magnets,
  - projected image has very high quality,
  - high resistance to damage; moreover, damage to surface does not affect touch recognition.
- While painted steel surface is designed for occasional use of whiteboard markers, TT-BOARD Pro IWBs with lifetime warranty PolyVision e3 surface can be used as normal whiteboard.
- Plug&Play, which means that board does not require drivers to work with Windows 7, 8, 8.1 and 10 computers.

### TECHNICAL SPECIFICATION

| Model                   | TT-BOARD 80 Pro                                     | TT-BOARD 90 Pro     | TT-BOARD 80                           | TT-BOARD 90         |
|-------------------------|---|---------------------|---------------------------------------|---------------------|
| Technology              | IR  |                     | IR                                    |                     |
| Touch points            | 10  |                     | 6                                     |                     |
| Board diagonal          | 83"   | 93"                 | 83"                                   | 93"                 |
| Working area diagonal   | 80"   | 90"                 | 80"                                   | 90"                 |
| Surface type            | Magnetic, Matte, Dry-erase, PolyVision e3 porcelain |                     | Magnetic, Matte, Dry-erase            |                     |
| Writing method          | Finger or any other stylus                          |                     | Finger or any other stylus            |                     |
| Aspect ratio            | 4:3   | 16:10               | 4:3                                   | 16:10               |
| Resolution              | 32 768 × 32 768                                     |                     | 32 768 × 32 768                       |                     |
| Accuracy                | <0,05 mm  |                     | <0,05 mm                              |                     |
| Cursor speed            | 120"/second   |                     | 120"/second                           |                     |
| Reaction time           | First dot 16 ms, continuous line 8 ms               |                     | First dot 16 ms, continuous line 8 ms |                     |
| Communication           | USB   |                     | USB                                   |                     |
| Shortcut bars           | Both sides  |                     | Both sides                            |                     |
| Board dimensions        | 1720 × 1250 × 36 mm                                 | 2059 × 1259 × 36 mm | 1720 × 1250 × 36 mm                   | 2059 × 1259 × 36 mm |
| Working area dimensions | 1680 × 1180 mm                                      | 1974 × 1174 mm      | 1680 × 1180 mm                        | 1933 × 1170 mm      |
| Interface               | USB   |                     | USB                                   |                     |
| Interactive pentray     | Yes   | Yes                 | No                                    | No                  |
| Aluminum frame          | Yes   | Yes                 | Yes                                   | Yes                 |
| Shortcut bars           | Yes   | Yes                 | Yes                                   | Yes                 |
| Software                | Avtek Interactive Suite                             |                     | Avtek Interactive Suite               |                     |
| Warranty                | 3 years, lifetime for surface                       |                     | 3 years                               |                     |
| Product code            | 1TV051  | 1TV110              | 1TV068                                | 1TV109              |



## AVTEK INTERACTIVE SUITE



**Avtek Interactive Suite** helps during classes, presentations and every other situations where interactive functions of interactive whiteboards or interactive displays are used. It allows both working on previously made documents, editing them during the meeting or making them from scratch.

- Double page mode, where two students can work on their own pages simultaneously.
- Two work modes: office mode and interactive mode. Office mode has interface resembling that of MS Office programs and allows intuitive access to all functions and is adapted to preparing materials. Second mode is designed for work on interactive whiteboard or interactive display: page area is maximized, most used functions quickly accessible and placed lower on the screen while user-customized floating toolbar will allow more personalization.
- Inserting local resources: images, video, sound and even MS Excell tables.
- Created objects stay editable. Changing color, thickness, fill are possible after drawing an object. More over: adding a hyperlink, recording audio and replaying all changes done to every object is possible too!
- Advanced screenshot taking tool allows not only to choose between taking a screenshot of desktop or current software page, but also lets you choose exact shape of taken image and whether to save it to harddrive, paste into a page or both.

After turning the software on user is presented with MS Office-like interface separated into standard toolbars: File, Edit, Page, View, Draw, Insert and Tools. While less demanding users will be content with basic tools like different kind of pens, inserting objects and tools (like a ruler or set square), a more experienced one will be able to use more advanced tools: grouping object in a very quick way, editing drawn objects, replaying every action made with an object or on an entire page. Those last two functions plus function of recording sound for each object lets teacher use interesting pre-recorded lessons.

## CHOOSE ACCESSORIES FOR THE INTERACTIVE WHITEBOARD



Soundbar – page 38



Mounts and brackets – page 32



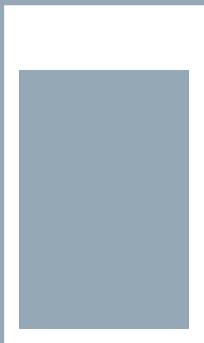
Projector mounts – page 30



# DOUBLE IMPRESSION

---

DIGITAL SIGNAGE  
DUAL DISPLAY





## DOUBLE-SIDED DIGITAL POSTER



Avtek DS Dual series is an innovative approach for ads and content displaying. Instead of two separate TV – a single device. Instead of usual image – a portrait image. Instead on boring on-the-wall solution – an unusual hanging from the ceiling.

This is Avtek DS dual – double-sided poster for ads, announcements or digital menus. Both screens are mounted inside slim bezel and, thanks to the high brightness, they are fantastic solution for shop windows, mall galleries or any other retail points. DS Dual unique feature allows to show different content on each side – one for the inside any second for the outside!

### The perfect environment for DS Dual:

#### Shops and agencies – especially store fronts

Thanks to the hanging mount and two screens a separate content can be delivered fast for potential customers inside and outside the shop

#### Conferences and fairs

Universal mounting system (steel links) can be used for fast mounting DS Dual solution on the booth construction or any other solid element under the ceiling

#### Restaurants and pubs

Possibility to show a separate content on the each side of the DS Dual poster creates a great opportunity for the restaurants or pubs – one screen (directed to the outside) can display deal-of-the-day promotion to encourage potential customers, second screen can display a standard menu for people inside.

### Key specification points of DS Dual:

- Two sizes available – 43 and 55 inch.
- Two professional LCD panels from LG: 700 nits, 24/7 operating mode.
- Format ratio: 9:16, portrait Full HD resolution (1080 × 1920) and popular image and video files format support – makes content creation fast and easy.
- Built-in content management system allows a very fast upload through USB stick.
- Wi-Fi onboard and separate digital signage software can be used for remote content management.
- HDMI and VGA ports are included and allows to show image form 3rd party players on the one of the sides of the device.
- Hanging mount solution is one of the best alternatives for standard on-the wall TV mounts.



## TECHNICAL SPECIFICATION

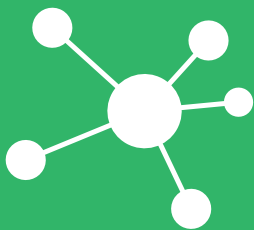
| MODEL                                | DS DUAL 43   | DS DUAL 55   |
|--------------------------------------|--|--|
| Panel                                | 2 × 43" (LG)   | 2 × 55" (LG)   |
| Display area                         | 531 × 943 mm   | 680 × 1210 mm  |
| Screen ratio                         | 9:16   |  |
| Resolution                           | 1080 × 1920 px   |  |
| Brightness                           | Both sides: 700 cd/m <sup>2</sup>  |  |
| Contrast                             | 1100:1   |  |
| Viewing angle                        | 178°   |  |
| Display colors                       | 16.7 mln   |  |
| Available work mode                  | 24/7   |  |
| Panel lifespan                       | ≥ 60 000 h   |  |
| <b>BUILT-IN MODULE SPECS</b>         |  |  |
| CPU                                  | 4 core ARM Cortex A17 (max. 1.8 GHz)   |  |
| GPU                                  | GPU 4 core ARM Mali-764  |  |
| RAM                                  | 2 GB   |  |
| Memory                               | 8 GB   |  |
| OS                                   | Android 5.1  |  |
| <b>COMMUNICATION</b>                 |  |  |
| Ports                                | HDMI, VGA, 2 × USB, SD slot (max. 32 GB)   |  |
| Network                              | 1 × LAN, built-in Wi-Fi (802.11 bgn)   |  |
| <b>MEDIA</b>                         |  |  |
| Supported formats                    | video  | RMVB, MPEG1/2/4, AVI, DIVX, XDIV, WMV9, H.264, VC-1, MOV, MKV, MP4, TS, M2T, VOB |
|                                      | audio  | MP3, WMA, WAV, EAAC+, MP2 dec, Vorbis (Ogg), AC3, FLAC, APE, BSAC                |
|                                      | image  | BMP/PNG/GIF/JPEG (max. resolution 4088 × 4088 px)                                |
|                                      | text   | TXT  |
| Playback modes                       | Full screen, portrait, same image on both screen or different images on both sides                         |  |
| Content publishing types             | HDMI in, VGA, USB, remotely (LAN / Wi-Fi)  |  |
| <b>OTHER PARAMETERS</b>              |  |  |
| Size (mm)                            | 1178 × 635 × 22 mm   | 1479 × 817 × 22 mm   |
| Box (mm)                             | 1238 × 695 × 161 mm  | 1750 × 1000 × 180 mm   |
| VESA (mm)                            | N/A  |  |
| Mounting type                        | Only vertical (hanging)  |  |
| Default housing color                | White  |  |
| Weight                               | Device weight: 18 kg (with box: 22 kg)   | Device weight: 33,5 kg (with box: 43,5 kg)                                       |
| Power consumption (average)          | 180 W  | 220 W  |
| Built-in speakers                    | 2 × 2 W, 8Ω  |  |
| Watchdog mode                        | Supported  |  |
| Scheduler                            | Auto power on/off  |  |
| Remote content distribution software | Available on demand  |  |
| Power                                | AC 110-230 V (50/60 HZ)  |  |
| Work. temperature                    | 0°C – 40°C   |  |
| Work. humidity (RH)                  | 0% – 90%   |  |
| Storage conditions                   | temp.: -20°C – 60°C, humidity: 10% – 90%   |  |
| Accessories in the box               | Remote controller, quick guide, EU power cable (3,6 m), Wi-Fi antenna, mounting kit (hanging installation) |  |
| Warranty                             | 2 years  |  |



# CENTRALIZED EDUCATION

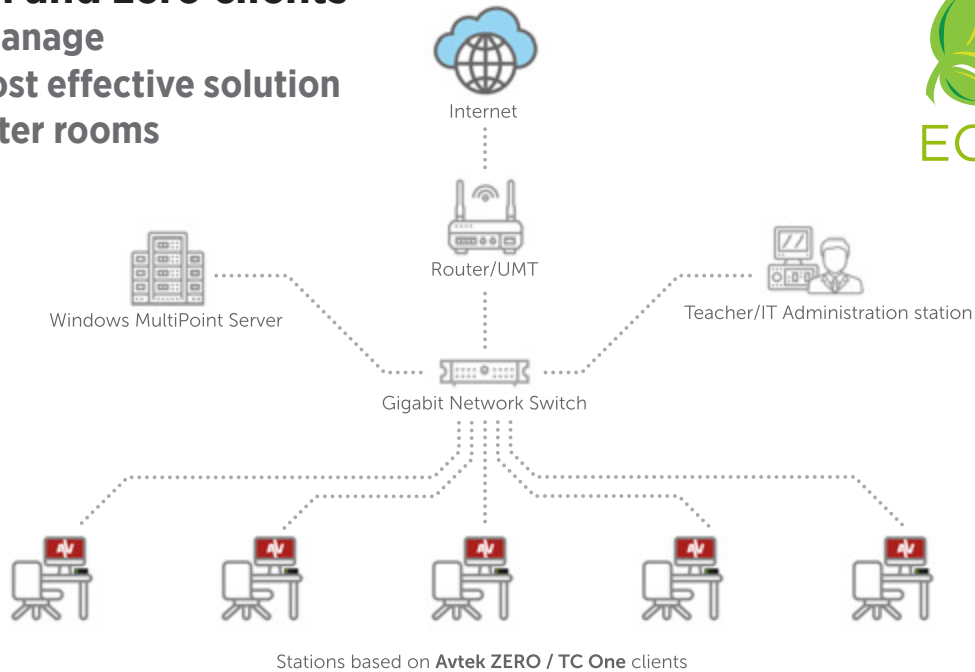
---

THIN / ZERO CLIENTS



## THIN / ZERO CLIENTS

### Avtek thin and zero clients easy to manage and cost effective solution for computer rooms



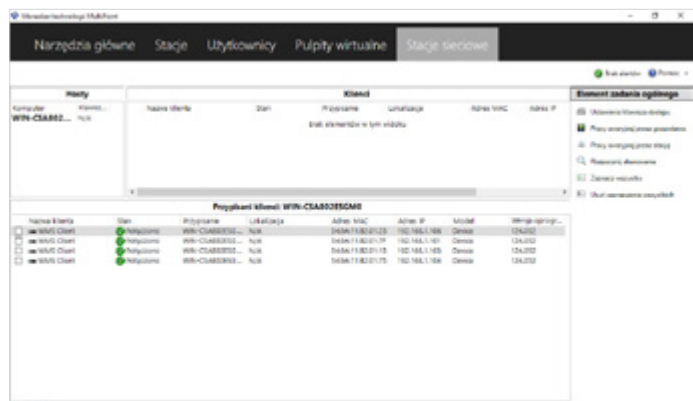
#### What is a thin/zero client based computer lab?

Thin and zero clients solution is an alternative to traditional computer labs, offering some strong benefits to the education sector and business environments alike. In a thin/zero client based computer lab, the noisy and bulky desktop PCs and clumsy laptops have been replaced with compact computer terminals installed on the rear of each display housing.

All such clients are connected to one central host – the server. Thanks to the dedicated architecture of the server machines and MultiPoint software, each workstation user in a terminal room can have their own separate desktop environment and can access a set of preinstalled applications.



Working with a thin/zero client based workstation feels identical to working with a conventional, standalone PC workstation, as each terminal is equipped with the same standard peripherals, such as a keyboard and a mouse, and supports all the well-known basic PC operation techniques. Need to access your own files? No problem at all! All you need to do is connect your pendrive to your terminal's USB port. The operating system's desktop, the applications, multimedia and internet access all work exactly in the same way and have the same look and feel as if they were used in a standard computer room.





### Advantages of a thin or zero client based computer lab

Avtek thin or zero client based computer labs offer that employ Avtek terminals offer numerous advantages over computer rooms set up as networks of desktop or laptop PCs:

- Lower upfront implementation cost. The thin or zero client based computer lab can cost as much as 30% less compared to computer rooms composed of desktop or laptop computers.
- Lower administration costs. Installing software and setting up all the clients in the room is quick and easy.
- Domain controller equivalent features. Individual user accounts, simplified management, optional Active Directory domain controller integration.
- Savings resulting from the significantly reduced power consumption. Each terminal draws as little as approx. 3.5W during normal operation.
- Better workspace management. Avtek clients are mounted on VESA brackets at the back of each display, so they do not occupy any space on the users' desks and make it easy to organise all the cabling.
- A working environment that is friendlier to users. Thin and zero clients do not generate any noise or heat, which increases the comfort of work.
- Centralised management through OS dashboard.



### TECHNICAL SPECIFICATION



| Model                      | Zero Client  | Thin Client (TC One HDMI)  |
|----------------------------|--|--|
| Chipset / Processor        | SoC (System on Chip) SMSC UFX6000  | ARM 2.0 GHz, 4 cores (Cortex A53)                                |
| RAM                        | -  | 512 Mb   |
| ROM                        | -  | 4Gb, flash   |
| Network card               | 10/100/1000 Mbps (RJ45 port)   |  |
| Supported OS and protocols | Windows Multipoint Server 2012 and 2016 / Linux Useful / RDP 8.1           |  |
| Max. supported resolution  | 1920 × 1080 @60Hz  |  |
| Outputs                    | 1 × VGA<br>1 × HDMI<br>5 × USB 2.0 port<br>1 × audio (mj 3,5 mm)           | 1 × VGA<br>1 × HDMI<br>4 × USB 2.0 port<br>1 × audio (mj 3,5 mm) |
| Inputs                     | 1 × power<br>1 × RJ45<br>1 × audio (mj 3,5 mm)                             |  |
| Warranty                   | 2 years  |  |
| Key points                 | Best budget-friendly solution for small classrooms (up to 10 workstations) | Flexible solution for any classroom size                         |
| Product code               | 1TV069   | 1TV134   |



# APPEALING PROJECTIONS

---

PROJECTION  
SCREENS





## ELECTRIC SCREENS

### PRODUCT DESCRIPTION

- White metal casing with unique square cross-section looks elegant in any room.
- Flat bottom of the casing ideal for in-ceiling installations.
- Special mounts make it ideal for ceiling or wall mounting.
- Plug&Play technology - screen ready to go as soon as it is plugged in without any configuration.
- Lower bar made of hard material protecting surface from creasing.
- High quality Matt White projection surface with gain factor 1.0 is perfect for every light conditions.
- Black frames increase perceived contrast ratio.
- Black TOP - screen can be positioned at viewer's eye level.
- It's enough to use the wired or wireless control to roll up or down the screen.
- Quiet tubular engine designed for intensive operation will do the rest of the work.
- Selected models available also with 0.85 Matt-Grey surface which increases perceived depth of black color during projection.



### TECHNICAL SPECIFICATION

| Model                  | Screen dimensions (cm) | Viewing area (cm) | Ratio | Side black frames (cm) | Black TOP (cm) | Black bottom (cm) | Product code Matt-White | Product code Matt-grey |
|------------------------|------------------------|-------------------|-------|------------------------|----------------|-------------------|-------------------------|------------------------|
| Video Electric 200     | 200 × 200              | 195 × 146         | 4:3   | 2.5                    | 49             | 5                 | 1EVE11                  | -                      |
| Video Electric 240     | 240 × 200              | 235 × 176         | 4:3   | 2.5                    | 19             | 5                 | 1EVE14                  | -                      |
| Video Electric 270     | 270 × 220              | 260 × 195         | 4:3   | 5                      | 20             | 5                 | 1EVE15                  | -                      |
| Video Electric 300P    | 300 × 227.5            | 290 × 217.5       | 4:3   | 5                      | 5              | 5                 | 1EVE54                  | -                      |
| Business Electric 200  | 200 × 200              | 190 × 122         | 16:10 | 2.5                    | 73             | 5                 | 1EVE45                  | -                      |
| Business Electric 240  | 240 × 200              | 235 × 147         | 16:10 | 2.5                    | 48             | 5                 | 1EVE46                  | -                      |
| Business Electric 270  | 270 × 220              | 260 × 162.5       | 16:10 | 5                      | 52.5           | 5                 | 1EVE47                  | -                      |
| Business Electric 300P | 300 × 227.5            | 290 × 181.2       | 16:10 | 5                      | 41.3           | 5                 | 1EVE53                  | -                      |
| Cinema Electric 200    | 200 × 200              | 190 × 107         | 16:9  | 5                      | 9              | 4                 | 1EVE55                  | 1EVE59                 |
| Cinema Electric 240    | 240 × 200              | 230 × 129.5       | 16:9  | 5                      | 66.5           | 4                 | 1EVE56                  | 1EVE60                 |
| Cinema Electric 270    | 270×220                | 260 × 146         | 16:9  | 5                      | 69             | 5                 | 1EVE58                  | -                      |
| Cinema Electric 300P   | 300 × 227.5            | 290 × 163         | 16:9  | 5                      | 59.5           | 5                 | 1EVE57                  | -                      |

## ELECTRIC SCREENS WALL SERIES

### PRODUCT DESCRIPTION

- White metal casing looks elegant in any room.
- Special mounts make it ideal for ceiling or wall mounting.
- Plug&Play technology - screen ready to go as soon as it is plugged in without any configuration.
- It's enough to use the wired control to roll up or down the screen.
- Electric engine designed for intensive operation will do the rest of the work.
- Lower bar made of hard material protecting surface from creasing.
- Black frames increase perceived contrast ratio.



### TECHNICAL SPECIFICATION

| Model             | Screen dimensions (cm) | Viewing area (cm) | Ratio | Side black frames (cm) | Black TOP (cm) | Black bottom (cm) | Product code |
|-------------------|------------------------|-------------------|-------|------------------------|----------------|-------------------|--------------|
| Wall Electric 180 | 185 × 143              | 180 × 135         | 4:3   | 2.5                    | 2.5            | 2.5               | 1EVEE4       |
| Wall Electric 200 | 205 × 158              | 200 × 150         | 4:3   | 2.5                    | 2.5            | 2.5               | 1EVEE5       |
| Wall Electric 240 | 245 × 188              | 240 × 180         | 4:3   | 2.5                    | 2.5            | 2.5               | 1EVEE6       |



## PRO MANUAL SCREENS

### PRODUCT DESCRIPTION

- White metal casing with unique square cross-section looks elegant in any room.
- Flat bottom of the casing ideal for in-ceiling installations.
- Lower bar made of hard material protecting surface from creasing.
- Pull-up safety catch makes possible to roll down the screen and fit to any format.
- Special mounts make it ideal for ceiling or wall mounting.
- SRC System (Slow Return Control) for safe operation.
- Black frames increase perceived contrast ratio.
- Black TOP - screen can be positioned at viewer's eye level.
- High quality Matt White projection surface with gain factor 1.0 is perfect for every light conditions.
- Selected models available also with 0.85 Matt-Grey surface which increases perceived depth of black color during projection.



### TECHNICAL SPECIFICATION

| Model             | Screen dimensions (cm) | Viewing area (cm) | Ratio | Side black frames (cm) | Black TOP (cm) | Black bottom (cm) | Product code |
|-------------------|------------------------|-------------------|-------|------------------------|----------------|-------------------|--------------|
| Video PRO 200     | 200 × 200              | 190 × 142.5       | 4:3   | 5                      | 52.5           | 5                 | 1EVS54       |
| Video PRO 240     | 240 × 200              | 230 × 172.5       | 4:3   | 5                      | 22.5           | 5                 | 1EVS55       |
| Business PRO 200  | 200 × 220              | 190 × 118.5       | 16:10 | 5                      | 76.5           | 5                 | 1EVS59       |
| Business PRO 240  | 240 × 200              | 230 × 143.5       | 16:10 | 5                      | 51.5           | 5                 | 1EVS60       |
| Cinema PRO 200    | 200 × 200              | 190 × 107         | 16:9  | 5                      | 88.1           | 5                 | 1EVS62       |
| Cinema PRO 240    | 230 × 200              | 230 × 129         | 16:9  | 5                      | 65.6           | 5                 | 1EVS63       |
| Cinema PRO 200 MG | 200 × 200              | 190 × 107         | 16:9  | 5                      | 88.1           | 5                 | 1EVS64       |
| Cinema PRO 240 MG | 230 × 200              | 230 × 129         | 16:9  | 5                      | 65.6           | 5                 | 1EVS65       |

### SPECIAL FEATURES OF ELECTRIC\* AND PRO MANUAL SCREENS



Square cross-section



Ideal for ceiling or wall mounting

\* excluding Wall series

## MANUAL SCREENS

### PRODUCT DESCRIPTION

- White metal casing looks elegant in any room.
- Special mounts make it ideal for ceiling or wall mounting.
- Lower bar made of hard material protecting surface from creasing.
- Pull-up safety catch makes possible to roll down the screen and fit to any format.
- High quality Matt White projection surface with gain factor 1.0 is perfect for every light conditions.
- Black frames increase perceived contrast ratio (Video, Business, Cinema).
- Black TOP - screen can be positioned at viewer's eye level (Video, Business, Cinema).

Manual screens are available in two versions (with or without black frames) and in four formats. Rolling up and down is manual which makes the screen both reasonably cheap and functional.



Video screens are suitable for traditional projectors with XGA (1024 × 768) resolution. In case of Business and Cinema screens they have panoramic screens, perfect for projector with WXGA (1280 × 800) and HD Ready or Full HD (1280 × 720 or 1920 × 1080) resolution. Thanks to that the user can ideally fit the image from the projector to the dimensions of the screen to receive the best visual perception.



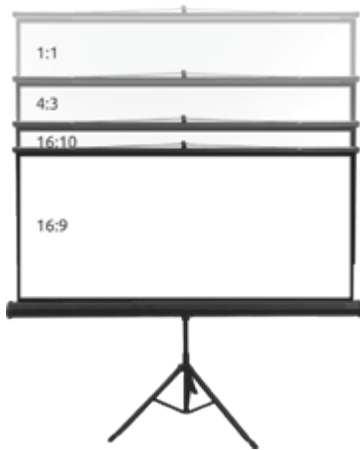
### TECHNICAL SPECIFICATION

| Model        | Screen dimensions (cm) | Viewing area (cm) | Ratio | Side black frames (cm) | Black TOP (cm) | Black bottom (cm) | Product code |
|--------------|------------------------|-------------------|-------|------------------------|----------------|-------------------|--------------|
| Wall 175     | 175 × 175              | 175 × 175         | 1:1   | -                      | -              | -                 | 1EVS03       |
| Wall 200     | 200 × 200              | 200 × 200         | 1:1   | -                      | -              | -                 | 1EVS04       |
| Video 175    | 175 × 175              | 170 × 127.5       | 4:3   | 2.5                    | 44.5           | 3                 | 1EVS23       |
| Video 200    | 200 × 200              | 195 × 146.5       | 4:3   | 2.5                    | 49.5           | 4                 | 1EVS24       |
| Video 240    | 240 × 200              | 230 × 172.5       | 4:3   | 5                      | 23.5           | 4                 | 1EVS25       |
| Video 280    | 280 × 212.5            | 270 × 202.5       | 4:3   | 5                      | 6              | 4                 | 1EVS26       |
| Business 200 | 200 × 200              | 190 × 119         | 16:10 | 5                      | 77             | 4                 | 1EVS56       |
| Business 240 | 240 × 200              | 230 × 144         | 16:10 | 5                      | 52             | 4                 | 1EVS57       |
| Business 280 | 280 × 200              | 270 × 169         | 16:10 | 5                      | 27             | 4                 | 1EVS58       |
| Cinema 200   | 200 × 200              | 190 × 107         | 16:9  | 5                      | 89             | 4                 | 1EVS37       |
| Cinema 240   | 240 × 200              | 230 × 129.5       | 16:9  | 5                      | 66.5           | 4                 | 1EVS38       |
| Cinema 280   | 280 × 200              | 270 × 152         | 16:9  | 5                      | 44             | 4                 | 1EVS61       |

## PORTABLE SCREENS

### PRODUCT DESCRIPTION

- Black metal casing looks elegant in any conditions and rooms.
- Thanks to special tripod and projection surface the screen can be easily kept in vertical position and it doesn't take too much space.
- Folded screen is lightweight and portable.
- Lower bar and upper bar height adjustment is possible with the special handles to position the screen at viewer's eye level. This also allows the user to obtain any format ratio (1:1, 4:3, 16:9, 16:10) to fit to any projector.
- Keystone effect eliminated by special arm that adjusts screen angle. The image is not distorted when the projector is not perpendicular to the screen surface.
- High quality Matt White projection surface with gain factor 1.0 is perfect for every light conditions.
- Black frames increase perceived contrast ratio (Tripod PRO).
- Strengthened tripod construction for extreme stability (Tripod PRO).
- Optional screen cover helps with even easier transportation.



Possibility to adjust the screen ratio to the projector image.

Portable screens assures mobility and easiness of displaying image. They are an universal solution to any type of projector or OHP. The screens are available in two versions (with or without black frames) and width from 150 to 200 cm.

### TECHNICAL SPECIFICATION

| Model               | Screen dimensions (cm) | Viewing area (cm) | Ratio | Side black frames (cm) | Black TOP (cm) | Black bottom (cm) | Product code |
|---------------------|------------------------|-------------------|-------|------------------------|----------------|-------------------|--------------|
| Tripod Standard 150 | 150 × 150              | 150 × 150         | 1:1   | -                      | -              | -                 | 1EVT02       |
| Tripod Standard 175 | 175 × 175              | 175 × 175         | 1:1   | -                      | -              | -                 | 1EVT03       |
| Tripod Standard 200 | 200 × 200              | 200 × 200         | 1:1   | -                      | -              | -                 | 1EVT04       |
| Tripod PRO 180      | 180 × 180              | 175 × 175         | 1:1   | 2.5                    | 2.5            | 2.5               | 1EVT13       |
| Tripod PRO 200      | 200 × 200              | 195 × 195         | 1:1   | 2.5                    | 2.5            | 2.5               | 1EVT14       |

## SCREEN COVER

### PRODUCT DESCRIPTION

- Universal cover for the projection screen preventing from dirt simplifying transportation thanks to the arm band.
- Cross section 20 × 20 cm and 195 cm or 215 cm length.
- Fits most of the portable screens on the market.

### PRODUCT CODE

195 cm - 1EVA01  
215 cm - 1EVA02



## LARGE SCALE FOLD SCREENS

Large scale screens are perfect for projections in rooms and in open air. Fold frame screens are available in two formats (4:3 and 16:9). Each format has five sizes, which makes it easier to fit the screen to projection requirements.

### PRODUCT DESCRIPTION

- Stable, silver color aluminum foldable frame.
- Ideal for large-scale projections both indoors and outdoors.
- Quick and simple assembly (no tools needed).
- Surface is fixed to frame with metal press studs which can be pressed by hand.
- Black frames increase perceived contrast ratio.
- Convenient, black case on castor wheels for easy transportation and carriage.
- Height adjustment is easy with special screws.
- Front projection surface is standard accessory.
- Optional rear projection surface for displaying the image from a projector installed at the back of the screen.







Press stud mounted surface



Fast and easy folding

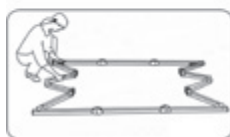
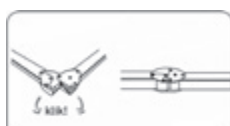
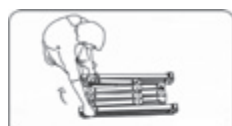


Height adjustment

### FOLD SCREEN TECHNICAL SPECIFICATION

| Model            | Screen dimensions (cm) | Viewing area (cm) | Ratio | Side black frames (cm) | Black TOP (cm) | Black bottom (cm) | Case dimensions (cm)               | Product code |
|------------------|------------------------|-------------------|-------|------------------------|----------------|-------------------|------------------------------------|--------------|
| Fold 240 (4:3)   | 236.8 × 202.9          | 243.8 × 182.9     | 4:3   | 10                     | 10             | 10                | 99 × 31 × 54                       | 1EVF11       |
| Fold 300 (4:3)   | 324.8 × 248.6          | 304.8 × 228.6     | 4:3   | 10                     | 10             | 10                | 119 × 31 × 60                      | 1EVF12       |
| Fold 360 (4:3)   | 385.8 × 294.3          | 365.8 × 274.3     | 4:3   | 10                     | 10             | 10                | 119 × 31 × 66                      | 1EVF13       |
| Fold 400 (4:3)   | 426.4 × 324.8          | 406.4 × 304.8     | 4:3   | 10                     | 10             | 10                | 119 × 31 × 66                      | 1EVF14       |
| Fold 500 (4:3)   | 528 × 401              | 508 × 381         | 4:3   | 10                     | 10             | 10                | 152.5 × 36 × 36<br>152.5 × 36 × 66 | 1EVF15       |
| Fold 180 (16:9)  | 219.2 × 130.3          | 203.2 × 114.3     | 16:9  | 8                      | 8              | 8                 | 93 × 31 × 45                       | 1EVF16       |
| Fold 220 (16:9)  | 263.8 × 157            | 243.8 × 137.2     | 16:9  | 10                     | 10             | 10                | 99 × 31 × 54                       | 1EVF17       |
| Fold 280 (16:9)  | 324.8 × 193            | 304.8 × 172.7     | 16:9  | 10                     | 10             | 10                | 119 × 31 × 60                      | 1EVF18       |
| Fold 340 (16:9)  | 385.8 × 226            | 365.8 × 205.7     | 16:9  | 10                     | 10             | 10                | 119 × 31 × 66                      | 1EVF19       |
| Fold 380 (16:9)  | 426.4 × 249            | 406.4 × 228.6     | 16:9  | 10                     | 10             | 10                | 119 × 31 × 66                      | 1EVF20       |
| Fold 305 (16:10) | 324.8 × 210.5          | 304.8 × 190.5     | 16:10 | 10                     | 10             | 10                | 126 × 38 × 50                      | 1EVF31       |
| Fold 365 (16:10) | 385.8 × 248.6          | 365.8 × 228.6     | 16:10 | 10                     | 10             | 10                | 126 × 38 × 56                      | 1EVF32       |
| Fold 406 (16:10) | 426.4 × 274            | 406.4 × 254       | 16:10 | 10                     | 10             | 10                | 126 × 38 × 56                      | 1EVF33       |
| Fold 508 (16:10) | 528 × 337.5            | 508 × 317.5       | 16:10 | 10                     | 10             | 10                | 160 × 42 × 65<br>160 × 43 × 39     | 1EVF34       |
| Fold 610 (16:10) | 629.6 × 401            | 609.6 × 381       | 16:10 | 10                     | 10             | 10                | 160 × 43 × 39<br>175 × 55 × 69     | 1EVF35       |

Screen folding





# FAST AND SECURE

---

MOUNTING  
SYSTEMS



## CEILING PROJECTOR MOUNTS

### EASYMOUNT

#### PRODUCT DESCRIPTION

- Possibility to mount directly on the ceiling (12 cm) or in 43 – 65 cm distance – thanks to regulation it's perfect for installation in typical offices or classrooms.
- Maximum spacing between assembly holes up to 32 cm and maximum projector weight up to 10 kg makes it possible to fit the mount to most of the portable projectors.
- Cable without a connector can be pulled through so it's easier to hide it inside the mount.
- +/- 15° tilt and +/- 22.5° side tilt helps to fit the displayed image precisely and easy to the projection surface.
- Optional extension pole gives the possibility to mount the projector at any distance from the ceiling.
- Color: white.
- Material: steel.

PRODUCT CODE: **1MVEM2**



### EASYMOUNT EXTENSION

#### EXTENSION POLE FOR EASYMOUNT

- After combining with EasyMount the mounting distance can be regulated from 71 cm to 122 cm or even 102 cm to 175 cm when all the elements are used.
- It's possible to connect more extensions to make bigger distance from the ceiling.
- Smooth length regulation allows the projector to be installed at any level.
- Material: steel.

PRODUCT CODE: **1MVEM3**



### PROMOUNT DIRECT

#### PRODUCT DESCRIPTION

- Possibility to mount directly on the ceiling (13 cm) – ideal for installation in low ceiling rooms.
- Ball joint for precise tilt regulation up to 25° and 360° rotation simplifies the adjustment to the projection surface.
- Precise regulation of the projector position with threaded distancing tubes for best image performance.
- Maximum spacing between assembly holes up to 38 cm and maximum projector weight up to 25 kg makes it possible to fit even bigger and heavier projectors.
- Cable can be pulled through so it's easier to hide it inside the mount.
- Optional extension pole gives the possibility to mount the projector at bigger distance from the ceiling.
- Color: silver.
- Material: aluminum.

PRODUCT CODE: **1MVPM5**



### PROMOUNT DIRECT EXTENSION

#### EXTENSION POLE FOR PROMOUNT DIRECT

- Together with ProMount the mounting distance can be regulated from 61 cm to 120 cm.
- The length regulation is with pitch of 3 cm.
- Cable with connector up to 25 mm wide can be pulled through.
- Material: aluminum.

PRODUCT CODE: **1MVPM6**





## WALL PROJECTOR MOUNTS

### WALLMOUNT NEXT 1200

#### PRODUCT DESCRIPTION

- Distance from the mounting point 78 – 120 cm.
- Vertical rotation: 360°; tilts: +/- 42°.
- Maximum spacing between assembly holes – 39 cm.
- Max. projector weight 20 kg.
- Cables can be pulled through.

PRODUCT CODE: **1MVWM11**



### WALLMOUNT PRO 1200 / 1500

#### PRODUCT DESCRIPTION

- Maximum spacing between assembly holes up to 30 cm and maximum projector weight up to 10 kg makes it possible to fit the mount most of the portable projectors.
- The projection distance can be regulated (from 63.5 up to 116.5 cm – WallMount Pro 1200 and from 83.5 up to 146.5 cm – WallMount Pro 1500) gives the possibility to adjust the image size from short throw projector to the interactive whiteboard size.
- Possibility to tilt the projector 42° in both axes simplifies the installation and adjustment to the projection surface.
- Cable can be pulled through so it's easier to hide it inside the mount.
- Plastic cover to hide the wall mounting plate.
- Color: white.
- Material: aluminum.

PRODUCT CODE:

WallMount Pro 1200 - **1MVWM8**

WallMount Pro 1500 - **1MVWM9**



## MOUNTING SYSTEMS FOR INTERACTIVE WHITEBOARDS

### REGULATED WALL MOUNT

#### PRODUCT DESCRIPTION

- Wall mounted bracket for Interactive Whiteboards.
- Smooth, manual height adjustment in 40 cm range.
- Universal short-throw projector arm included.
- Maximum load 32 kg (IWB + projector).
- Maximum projector weight 6 kg.
- Projector arm adjusts in the range of 80 cm - 140 cm.
- Gas springs.
- Solid steel construction.

PRODUCT CODE:

up to 32 kg **1MV011** | up to 50 kg **1MV026**



### MOBILE REGULATED STAND

#### PRODUCT DESCRIPTION

- Mobile bracket for Interactive Whiteboards.
- Mobile stand for easy transportation.
- Smooth, manual height adjustment in 40 cm range.
- Universal short-throw projector arm included.
- Maximum load 32 kg (IWB + projector).
- Maximum projector weight 6 kg.
- Projector arm adjusts in the range of 80 cm - 140 cm.
- Gas springs.
- Solid steel construction.

PRODUCT CODE:

up to 32 kg **1MV013** | up to 50 kg **1MV027**



## STAND FOR INTERACTIVE WHITEBOARDS

### PRODUCT DESCRIPTION

- Mobile bracket for Interactive Whiteboards.
- Mobile stand for easy transportation with plastic castors.
- For boards with height from 120 cm to 137 cm.
- Boards with any width can fit.
- Solid steel construction.

PRODUCT CODE: **1MV009**



## INTERACTIVE WHITEBOARD STAND WITH PROJECTOR ARM

### PRODUCT DESCRIPTION

- Mobile stand for interactive whiteboards.
- For boards with height from 120 cm - 137 cm.
- Integrated universal projector mount.
- Length of the projector mount arm from 80 cm - 140 cm.
- Width of the board is not limited.
- Mobile stand on plastic castors that can be blocked.
- Solid steel construction.

PRODUCT CODE: **1MV032**



## MOUNTING SYSTEMS FOR TOUCHSCREENS

### ELECTRIC STAND AND ELECTRIC LIFT&FLIP STAND

Mobile electric stand is an ideal solution for users who want to keep maximum freedom when using their screen. It's irreplaceable when screen will be moved between classes or rooms, used by people with varying heights or has to fulfill different functions: small team brainstorming, presentation for a wide audience or an interactive table.

Avtek TouchScreen Electric Stand and Electric Lift&Flip stand will help fulfill each of those roles. Electric engine can be controlled through a remote, buttons on the frame or – when used with Avtek TouchScreen 5 screens – also from the interactive flat panels toolbar. In that case user can set predefined positions and switch between them with one click.

Easy, non-effort height adjustment in TouchScreens toolbar (and in case of Electric Lift&Flip – height and lean), stable construction with 4 wheels with breaks and accepting screens up to 75" and wide adjustment range will make TouchScreen Electric Stand and Electric Lift&Flip Stand a useful addition to everyday comfort of using an interactive flat panel.

### TOUCHSCREEN ELECTRIC STAND

- Vertical height adjustment: 500 mm.
- Dimensions: 1234 × 844 × 1284 mm.
- Weight: 49,2 kg.
- Supported weight: 100 kg.
- Maximum recommended screen size: up to 75".
- Screen mount included.
- Max VESA: 800 × 600.
- Preset positions: 2 slots for height.
- Can be controlled directly from Avtek TouchScreen toolbar.

PRODUCT CODE: **1MV049**



### TOUCHSCREEN ELECTRIC LIFT&FLIP STAND

- Vertical height adjustment: 560 mm.
- Lean adjustment: 90°.
- Lowest height as interactive table: 980,5 mm.
- Dimensions: 1234 × 844 × 1219 mm.
- Weight: 52 kg.
- Supported weight: 100 kg.
- Maximum recommended screen size: up to 75".
- Screen mount included.
- Max VESA: 800 × 600.
- Preset positions: 2 slots for height, 2 slots for lean.
- Can be controlled directly from Avtek TouchScreen toolbar.

PRODUCT CODE: **1MV050**





## TOUCHSCREEN ELECTRIC COLUMN

### WALL MOUNTING SYSTEM

It keeps all the benefits of other TouchScreen Electric mounting systems (except for the wheels!) and is suited for users who want their screens fixed on a wall but are not willing to give up flexibility of height adjustment. Since the Column supports most of screens weight it can also be used where the wall itself is not strong enough to mount a screen.

- Vertical height adjustment: 560 mm.
- Dimensions: 960 × 377 × 960 mm.
- Supported weight: 100 kg.
- Maximum recommended screen size: up to 86".
- Screen mount included.
- Max VESA: 800 × 600.
- Preset positions: 2 slots for height.
- Can be controlled directly from Avtek TouchScreen toolbar.

PRODUCT CODE: **1MV052**



## TOUCHSCREEN MOBILE STAND PRO

### MOBILE STAND FOR INTERACTIVE DISPLAYS

TouchScreen Mobile Stand Pro is a sturdy and stable mobile stand for interactive screens. Quality materials and solid framework ensure load capacity that allows use with even the biggest screens.

- Max. load 150 kg.
- Big shelf for a computer or other accessories.
- Very stable, solid construction.
- Black color.
- Rubbered wheels makes moving it easy and quiet.
- Wheels can be blocked for safety.

PRODUCT CODE (for Avtek monitors): **1MV041T**

PRODUCT CODE (for other monitors): **1MV041Z**



## TOUCHSCREEN MOBILE STAND NEXT

### MOBILE STAND FOR INTERACTIVE DISPLAYS

Mobile Stand Next is a new generation of Avtek mobile stands. It has a modern, sleek, minimalistic design that still supports screens up to 86" and it's grey color that matches with Avtek TouchScreen frame.

- Max. load 100 kg.
- Elegant design.
- Shelf for laptop or other accessories.
- Grey color.
- Rubbered wheels for easy and quiet of movement.
- Wheels can be blocked for safety.

PRODUCT CODE: **1MV051**

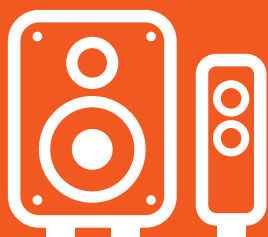




# FOR THE DESIRED EFFECT

---

ACCESORIES



## ACCESSORIES



### SOUNDBAR

Stereo soundbar is perfect for small and medium classrooms and conference rooms, best used to extend sound quality from TVs, Touch Screens, Interactive Whiteboards and computers.

- 2 × 18W RMS.
- Perfect for any TV, Touch Screen, Interactive Whiteboard or computer.
- Wireless Bluetooth connection.
- Inputs: Optical, Audio, RCA.
- Three sound modes: music, movie and voice.
- Remote control.
- Wall mount kit included.
- Subwoofer output.

PRODUCT CODE: **1SVS08**

### BAG+

#### UNIVERSAL PROJECTOR BAG

- Protective 10 mm foam increases the safety of the projector.
- Holds any projector of size up to 270 × 110 × 350 mm.
- Additional, small pocket for remote control inside.
- 2 velcro bars for space organization and content protection.
- External pocket for cables & accessories (290 × 260 mm).
- Comfortable carry handle and removable arm belt.
- Made of durable PVC600D nylon.
- Color: black.

PRODUCT CODE: **1AV004**



### HDMI CABLE

#### V 1.4 HDMI CABLE

- HDMI cable – the most popular digital standard for video and audio transmission.
- High wire cross sections assures high quality signal.
- Ferrite rings reducing signal noise.
- HDMI v. 1.4 allows transmission of signal with resolution up to 4096 × 2160 px.
- Length: 10 m.
- Color: black.

PRODUCT CODE: **1KV007**





## IWB CLEANER

Whiteboard surface cleaning detergent. Works great for everyday cleaning of both whiteboards and interactive whiteboards, removes small stains and dry erase marker prints.

PRODUCT CODE: **1TV049**



## MARKER

Dry erase markers for whiteboards and interactive whiteboards. Thanks to four colors user can clearly separate different informations and high quality ink allows quick writing and erasing.

PRODUCT CODE: **1TV048**



## WARRANTY

High quality and reliability of all Avtek products is confirmed by 3 years European Warranty with some exceptions listed in the table below.

Interactive displays:

| Model  | Warranty  |
|--|---|
| TouchScreen 5 Lite<br>TouchScreen 5 Connect+<br>TouchScreen 5 Business | standard warranty of 3 years, 2 years for panel – longer warranty may be offered in your region, contact your local dealer for more information |
| OPS 4K i3 8100, i5 8400  | 2 years   |

Interactive whiteboards:

| Model                   | Warranty   |
|-------------------------|--|
| TT-BOARD 80, 90         | 3 years (optional extension to 5 years)                                    |
| TT-BOARD 80 Pro, 90 Pro | 3 years (optional extension to 5 years), lifetime warranty for the surface |

Terminal clients:

| Model             | Warranty |
|-------------------|----------|
| ZERO, TC One HDMI | 2 years  |



# INDEX

| PRODUCT                             | PAGE |
|-------------------------------------|------|
| <b>INTERACTIVE DISPLAYS</b>         |      |
| TOUCHSCREEN 5 LITE 55               | 4, 7 |
| TOUCHSCREEN 5 LITE 65               | 4, 7 |
| TOUCHSCREEN 5 LITE 75               | 4, 7 |
| TOUCHSCREEN 5 LITE 86               | 4, 7 |
| TOUCHSCREEN 5 CONNECT+ 65           | 4, 7 |
| TOUCHSCREEN 5 CONNECT+ 75           | 4, 7 |
| TOUCHSCREEN 5 CONNECT+ 86           | 4, 7 |
| TOUCHSCREEN 5 BUSINESS 65           | 4, 7 |
| TOUCHSCREEN 5 BUSINESS 65           | 4, 7 |
| AVTEK SHARE                         | 6    |
| <b>INTERACTIVE WHITEBOARDS</b>      |      |
| TT-BOARD 80 PRO                     | 10   |
| TT-BOARD 90 PRO                     | 10   |
| TT-BOARD 80                         | 10   |
| TT-BOARD 90                         | 10   |
| <b>DIGITAL SIGNAGE DUAL DISPLAY</b> |      |
| AVTEK DS DUAL                       | 15   |
| <b>TERMINAL CLIENTS</b>             |      |
| ZERO CLIENT                         | 19   |
| THIN CLIENT (TC ONE HDMI)           | 19   |
| <b>ELECTRIC SCREENS</b>             |      |
| VIDEO ELECTRIC 200                  | 22   |
| VIDEO ELECTRIC 240                  | 22   |
| VIDEO ELECTRIC 270                  | 22   |
| VIDEO ELECTRIC 300P                 | 22   |
| BUSINESS ELECTRIC 200               | 22   |
| BUSINESS ELECTRIC 240               | 22   |
| BUSINESS ELECTRIC 270               | 22   |
| BUSINESS ELECTRIC 300P              | 22   |
| CINEMA ELECTRIC 200                 | 22   |
| CINEMA ELECTRIC 200 MG              | 22   |
| CINEMA ELECTRIC 240                 | 22   |
| CINEMA ELECTRIC 240 MG              | 22   |
| CINEMA ELECTRIC 270                 | 22   |
| CINEMA ELECTRIC 300P                | 22   |
| <b>ELECTRIC SCREENS WALL SERIES</b> |      |
| WALL ELECTRIC 180                   | 22   |
| WALL ELECTRIC 200                   | 22   |
| WALL ELECTRIC 240                   | 22   |
| MODULE FOR REMOTE CONTROL           | 22   |
| <b>PRO MANUAL SCREENS</b>           |      |
| VIDEO PRO 200                       | 23   |
| VIDEO PRO 240                       | 23   |
| BUSINESS PRO 200                    | 23   |
| BUSINESS PRO 240                    | 23   |
| CINEMA PRO 200                      | 23   |
| CINEMA PRO 240                      | 23   |
| CINEMA PRO 200 MG                   | 23   |
| CINEMA PRO 240 MG                   | 23   |
| <b>MANUAL SCREENS</b>               |      |
| WALL 175                            | 24   |
| WALL 200                            | 24   |
| VIDEO 175                           | 24   |
| VIDEO 200                           | 24   |
| VIDEO 240                           | 24   |

| PRODUCT   | PAGE  |
|---|-------|
| VIDEO 280   | 24    |
| BUSINESS 200  | 24    |
| BUSINESS 240  | 24    |
| BUSINESS 280  | 24    |
| CINEMA 200  | 24    |
| CINEMA 240  | 24    |
| CINEMA 280  | 24    |
| <b>PORTABLE SCREENS</b>                             |       |
| TRIPOD STANDARD 150                                 | 25    |
| TRIPOD STANDARD 175                                 | 25    |
| TRIPOD STANDARD 200                                 | 25    |
| TRIPOD PRO 180                                      | 25    |
| TRIPOD PRO 200                                      | 25    |
| SCREEN COVER  | 25    |
| <b>LARGE SCALE FOLD SCREENS</b>                     |       |
| FOLD 240 (4:3)                                      | 26-27 |
| FOLD 300 (4:3)                                      | 26-27 |
| FOLD 360 (4:3)                                      | 26-27 |
| FOLD 400 (4:3)                                      | 26-27 |
| FOLD 500 (4:3)                                      | 26-27 |
| FOLD 180 (16:9)                                     | 26-27 |
| FOLD 220 (16:9)                                     | 26-27 |
| FOLD 280 (16:9)                                     | 26-27 |
| FOLD 340 (16:9)                                     | 26-27 |
| FOLD 380 (16:9)                                     | 26-27 |
| FOLD 305 (16:10)                                    | 26-27 |
| FOLD 365 (16:10)                                    | 26-27 |
| FOLD 406 (16:10)                                    | 26-27 |
| FOLD 508 (16:10)                                    | 26-27 |
| FOLD 610 (16:10)                                    | 26-27 |
| <b>CEILING PROJECTOR MOUNTS</b>                     |       |
| EASYMOUNT   | 30    |
| EASYMOUNT EXTENSION                                 | 30    |
| PROMOUNT DIRECT                                     | 30    |
| PROMOUNT DIRECT EXTENSION                           | 30    |
| <b>WALL PROJECTOR MOUNTS</b>                        |       |
| WALLMOUNT NEXT 1200                                 | 31    |
| WALLMOUNT PRO 1200 / 1500                           | 31    |
| <b>MOUNTING SYSTEMS FOR INTERACTIVE WHITEBOARDS</b> |       |
| REGULATED WALL MOUNT                                | 32    |
| MOBILE REGULATED STAND                              | 32    |
| STAND FOR INTERACTIVE WHITEBOARDS                   | 33    |
| INTERACTIVE WHITEBOARD STAND WITH PROJECTOR ARM     | 33    |
| <b>MOUNTING SYSTEMS FOR TOUCHSCREENS</b>            |       |
| AVTEK TOUCHSCREEN ELECTRIC STAND                    | 34    |
| AVTEK TOUCHSCREEN ELECTRIC LIFT&FLIP STAND          | 34    |
| ELECTRIC COLUMN                                     | 35    |
| TOUCHSCREEN MOBILE STAND PRO                        | 35    |
| TOUCHSCREEN MOBILE STAND NEXT                       | 35    |
| <b>ACCESSORIES</b>                                  |       |
| SOUNDBAR  | 38    |
| BAG+  | 38    |
| HDMI CABLE  | 38    |
| IWB CLEANER   | 39    |
| MARKER  | 39    |



**Avtek**

Avtek brand is owned by:

**ViDiS S.A.**

Logistyczna 4  
Bielany Wrocławskie  
55-040 Kobierzyce  
POLAND

tel.: +48 71 33 880 13  
e-mail: [export@vidis.pl](mailto:export@vidis.pl)

[www.avtek.eu](http://www.avtek.eu)